



Instructions

JT - TRUCK BED MOLLE PANELS

Thank you for purchasing your Bed MOLLE Panels from AAL! We greatly appreciate your trust in our company. We take that purchase and your commitment to us very seriously. If you have any questions along the way, please don't hesitate to give us a call at 385.202.4188.

****Please read these instructions thoroughly before starting this project.****

****These instructions will cover the installation of the front, driver, and passenger side truck bed MOLLE Panels. If you only purchased one or two of the three, scroll to the instructions for your specific panel(s)****

Tools/Components Required:

There is more than one tool for every job, but below is the list of tools we use for this installation.

Tools listed are for assembly only, as disassembly tools will vary.

- 4mm Hex Key Allen Wrench
(for M6 hex key bolts)

What's Included

Front Bed MOLLE Parts:

Driver Front Panel	1	Driver Bottom Brace	1
Passenger Front Panel	1	Passenger Bottom Brace	1
Front Connector	1	Passenger to Front Connector	1

Driver Side Bed MOLLE Parts:

Rear Driver Side Panel	1
Front Driver Side Panel	1
Middle Bracket	1

Passenger Side Bed MOLLE Parts:

Rear Passenger Side Panel	1
Front Passenger Side Panel	1
Middle Bracket	1

Front Bed MOLLE Hardware:

M6x14mm Button Head Bolts	20
M6 Nylon Insert Nuts	20

Side Bed MOLLE Hardware:

(Same for Both Sides)

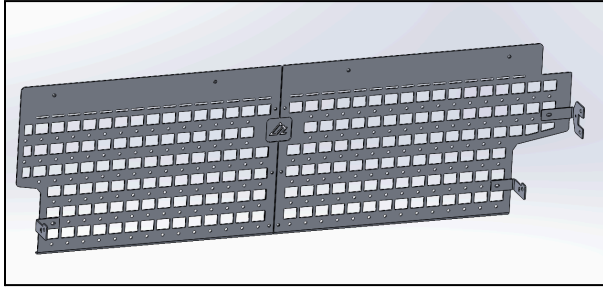
M6x14mm Button Head Bolts	10 (per side)
7mm Aluminum Spacer	3 (per side)
M6x50mm Button Head Bolts	1 (per side)

Part Overview and Prep

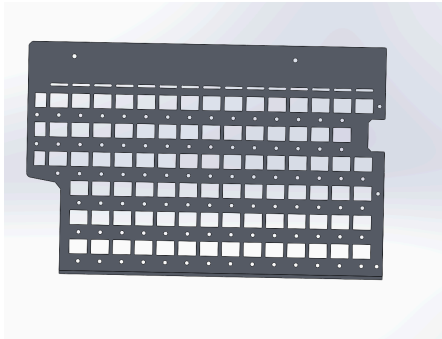
First lets review images of all the necessary parts and hardware to ensure we have everything we need for the installation process



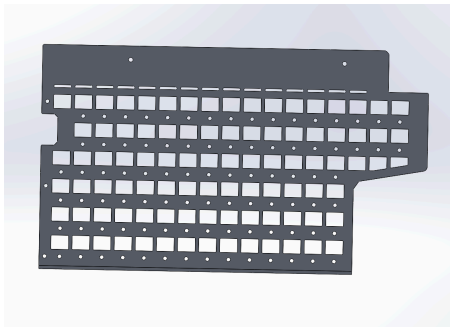
Front Bed MOLLE Parts:



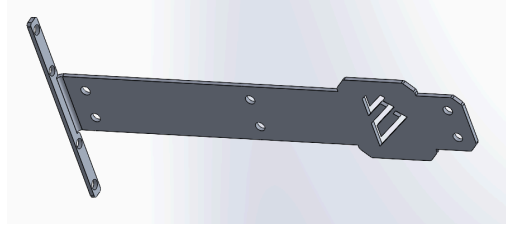
Driver Front Panel (1):



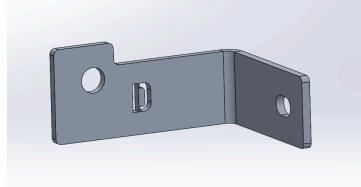
Passenger Front Panel (1):



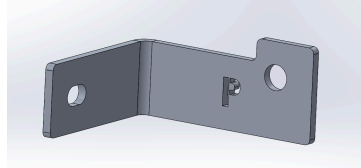
Front Connector (1):



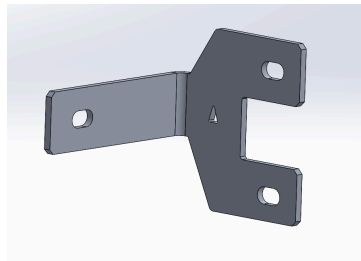
Driver Bottom Brace (1):



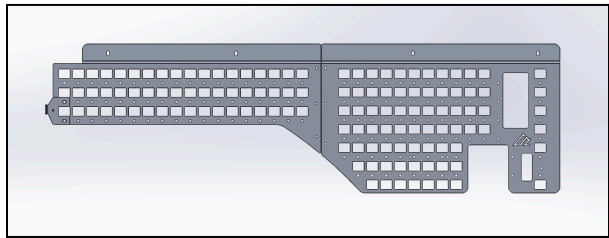
Passenger Bottom Brace (1):



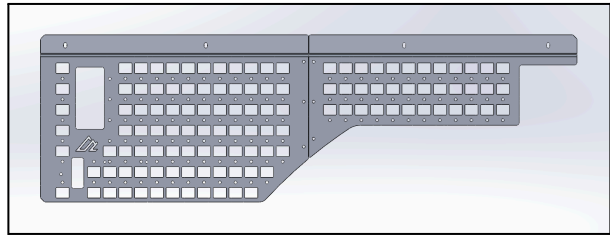
Passenger to Front Connector (1):



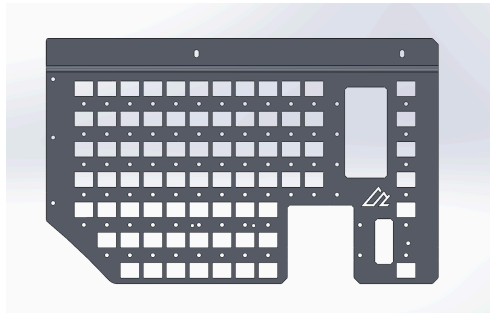
Passenger Side Bed MOLLE Parts:



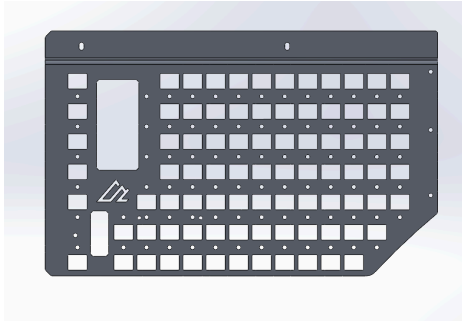
Driver Side Bed MOLLE Parts:



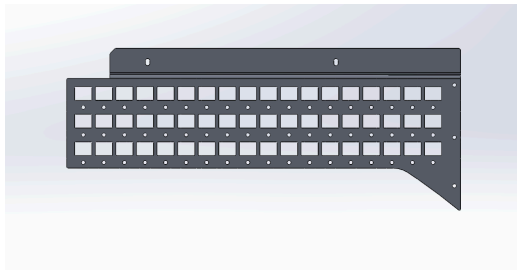
Rear Driver Side Panel (1):



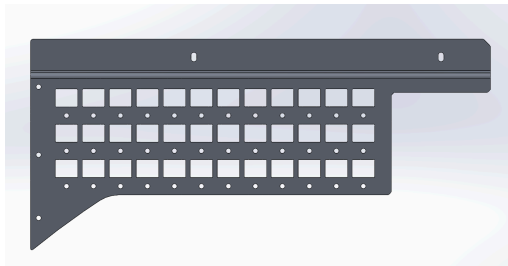
Rear Passenger Side Panel (1):



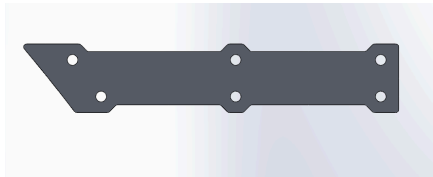
Front Driver Side Panel (1):



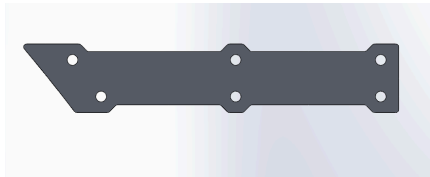
Front Passenger Side Panel (1):



Middle Connector (1):



Middle Connector (1):



Front Bed Panel Hardware:

M6x14mm Button Head Bolts 20



M6 Nylon Insert Nuts 20



Side Panel Hardware:

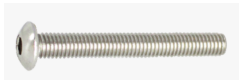
M6x14mm Button Head Bolts 10 (per side)



7mm Aluminum Spacers 3 (per side)



M6x50mm Button Head Bolts 1 (per side)



Prep

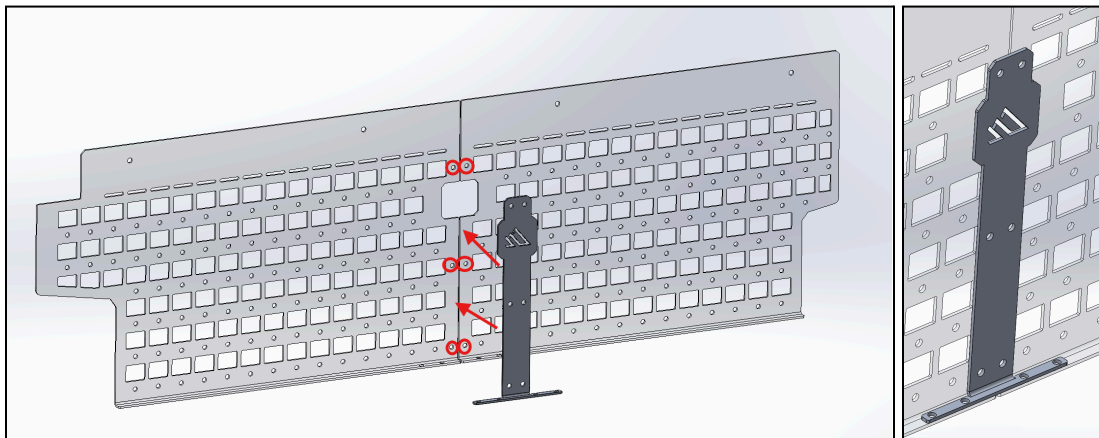
To prepare for installation, simply ensure that the truck bed is completely empty and that all screw holes are as well

FRONT PANEL ASSEMBLY

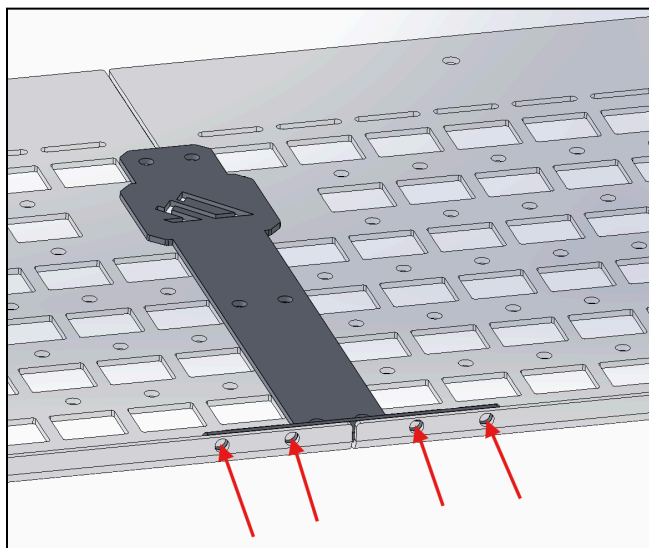
If you didn't purchase the Front Bed MOLLE Panels, skip ahead to the Driver and Passenger Side Assemblies

Step 1 - Connect the Front MOLLE Panels

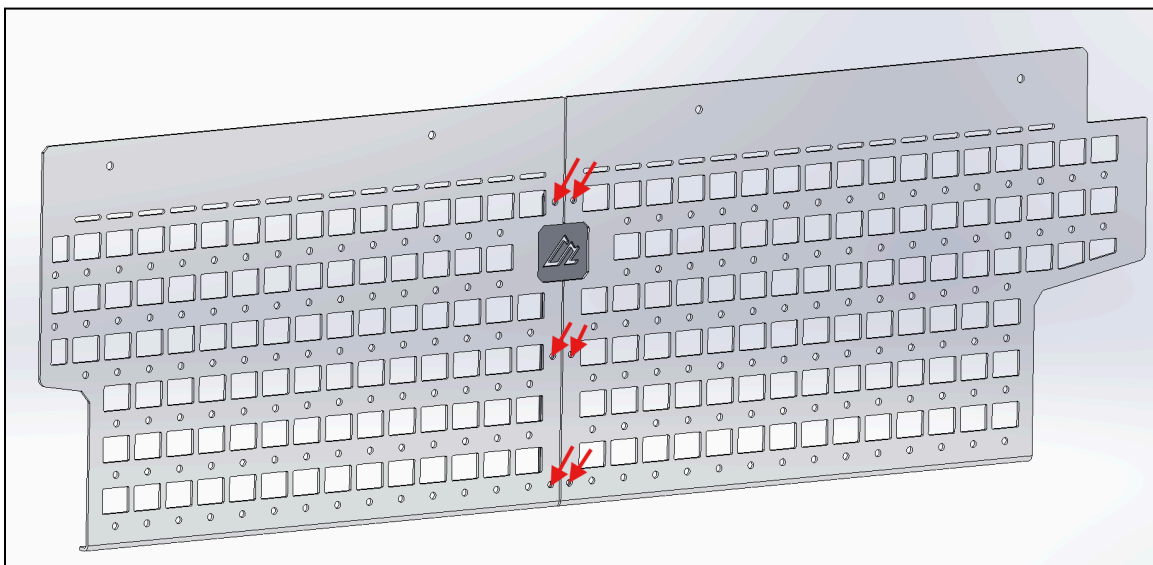
Flip over the **Front Passenger** and **Front Driver Panels** and align the **Front Connector Bracket** with the six holes shown below.



Then using **(4) M6x14mm button head bolts** and **(4) M6 nuts**, bolt the bottom flange of the connector bracket to the panels.

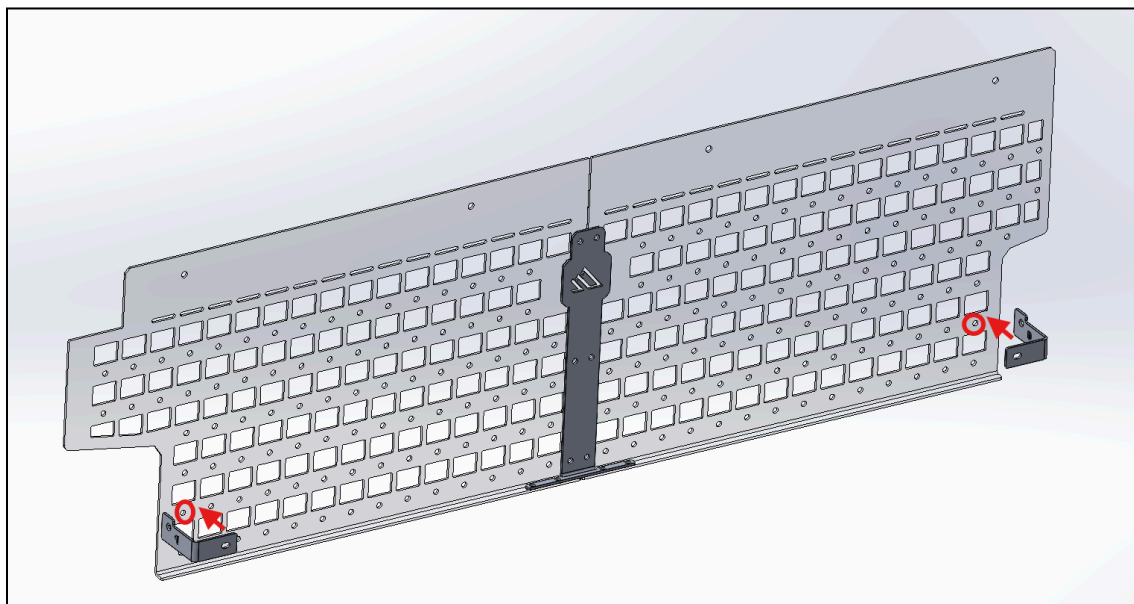


Then tilt the fixture upwards and bolt in (6) **M6x14mm button head bolts** and (6) **M6 Nuts** into the front face of the panels

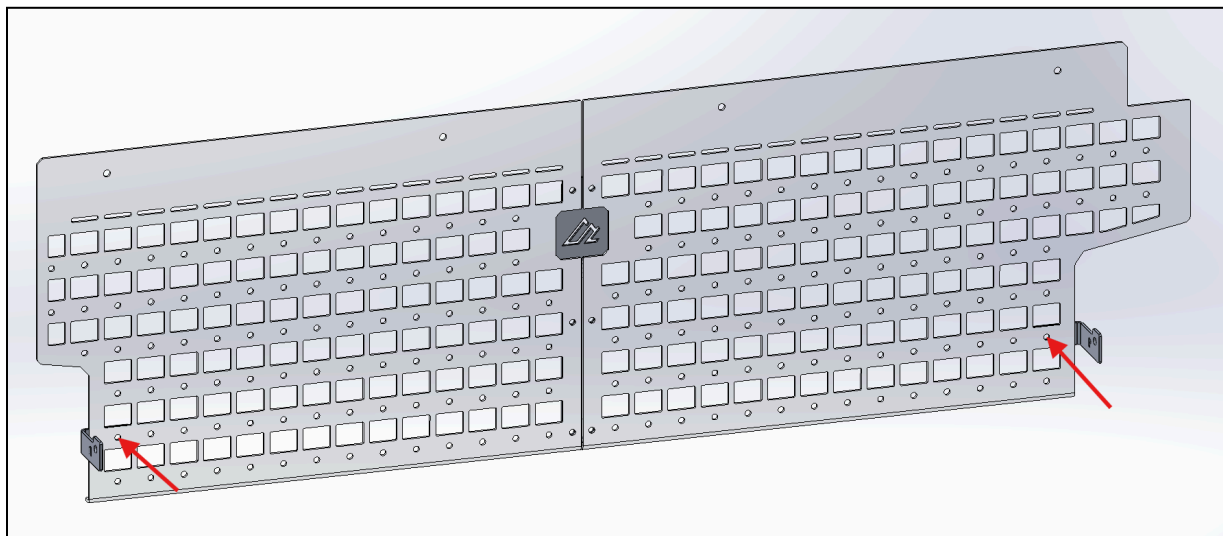


Step 2 - Attach the Mounting Brackets

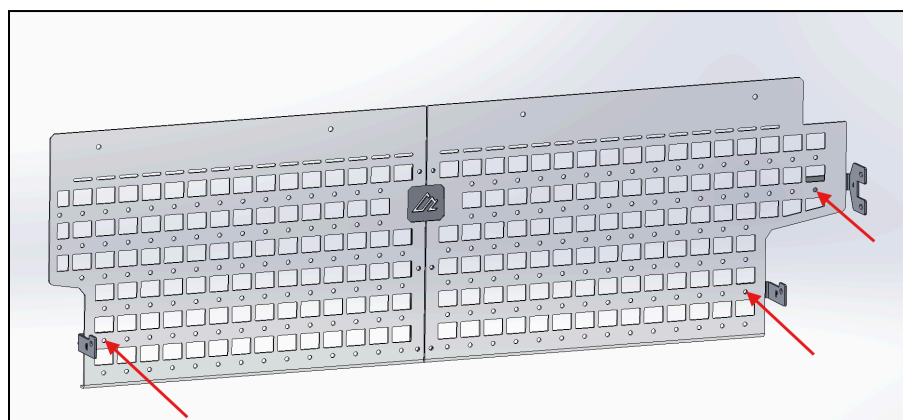
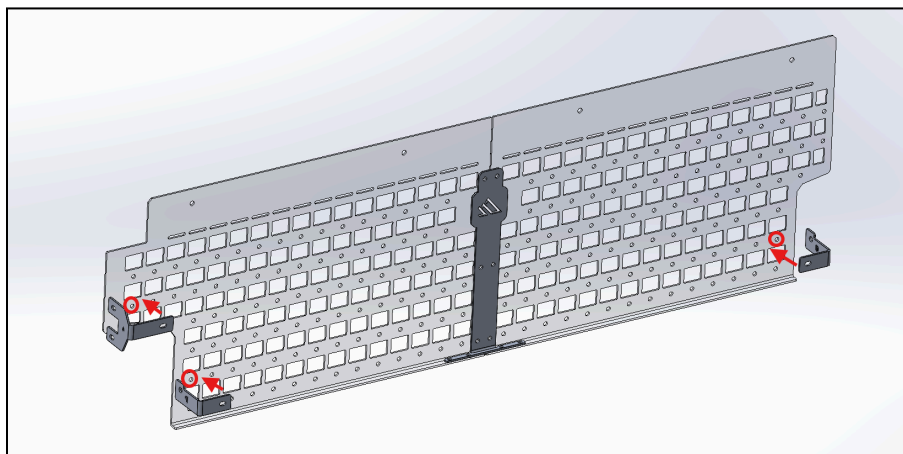
In a similar fashion to the connector bracket, align the **Driver** and **Passenger Braces** in the positions circled below on the back side of the MOLLE panels.



Once aligned, bolt them through the front face using **(2) M6x14mm button head bolts** and **(2) M6 Nuts**.

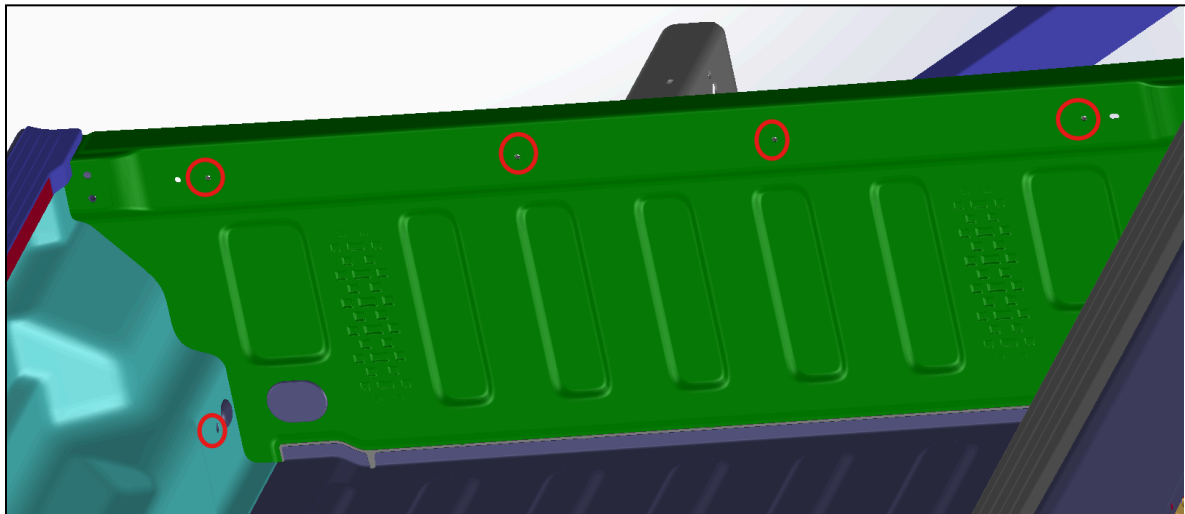
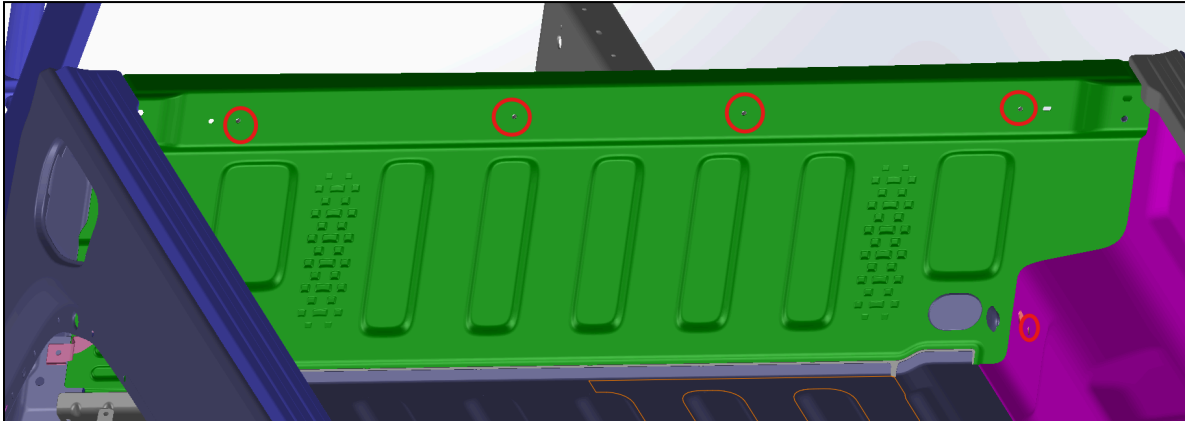


NOTE: If you Intend on attaching a **Passenger Side Bed MOLLE Panel**, attach the **Passenger to Front Connector** as shown below. This necessitates one more button head bolt and nut

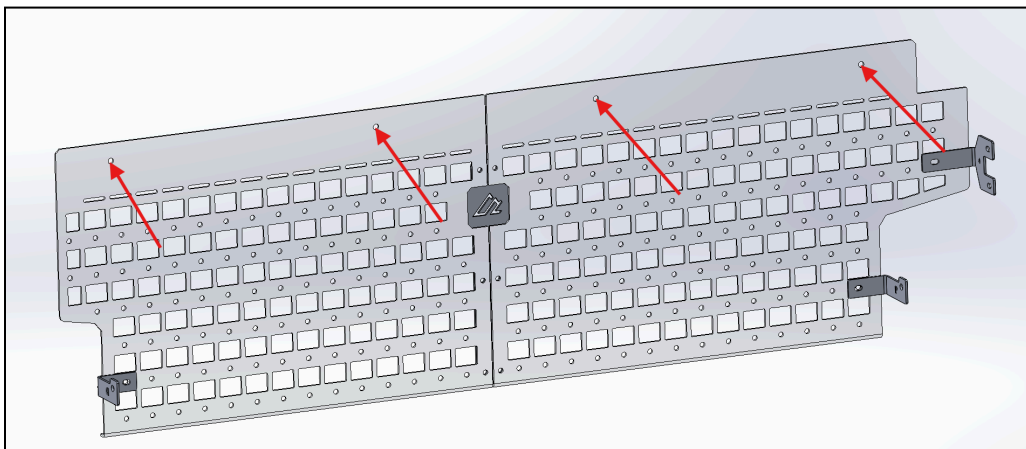


Step 3 - Mount the Front Panels to the Truck Bed

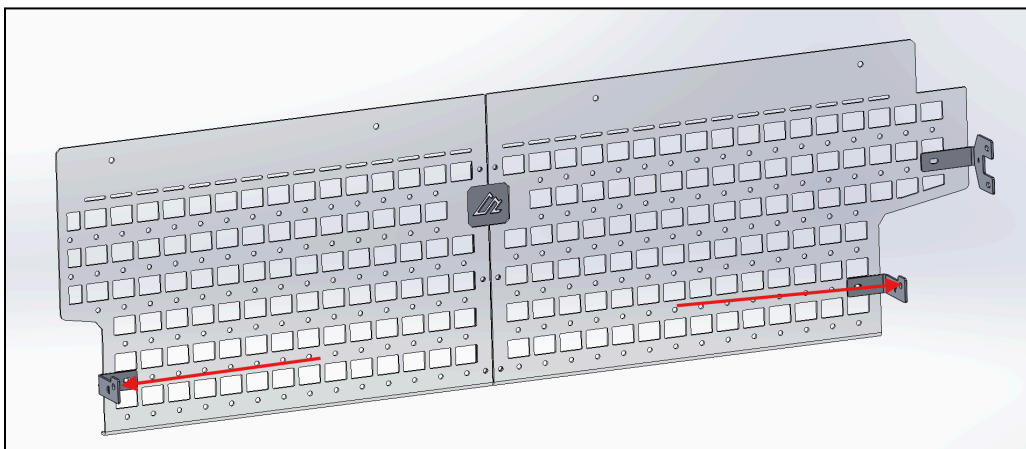
Move the fixture into the bed of the truck and slide it to the front of the bed. Align the four front holes on the top of the panel as well as the holes in the mounting brackets with the factory holes in the truck bed outlined below.



Then using **(4) M6x14mm button head bolts**, bolt the 4 holes on the top of the panels into the bed of the truck.



Then Bolt the mounting brackets into the bed using **(2) M6x14mm button head bolts**



Once mounted, the panel should look like this,

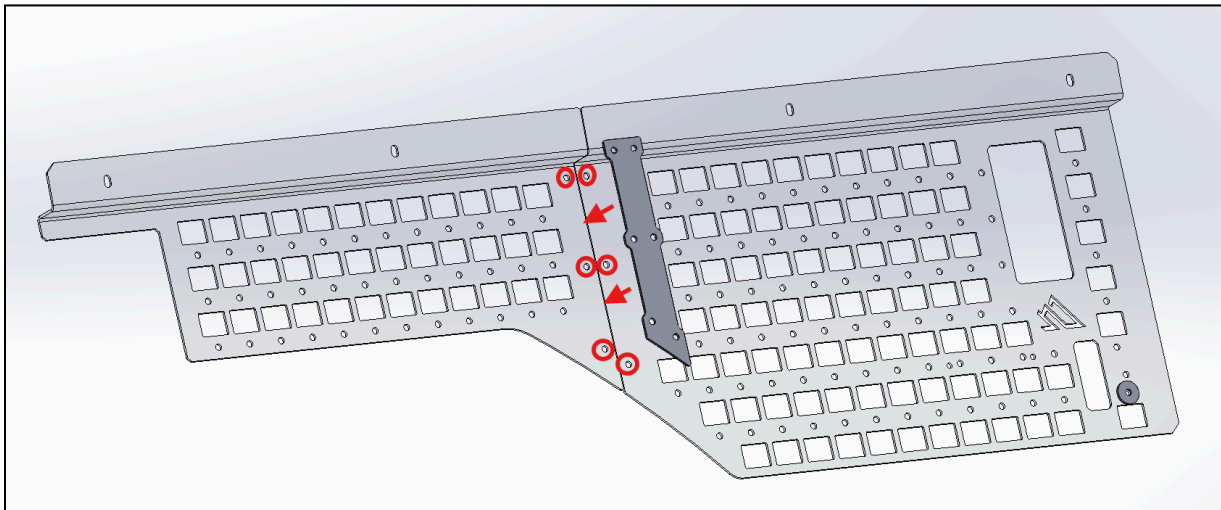


DRIVER SIDE BED MOLLE ASSEMBLY

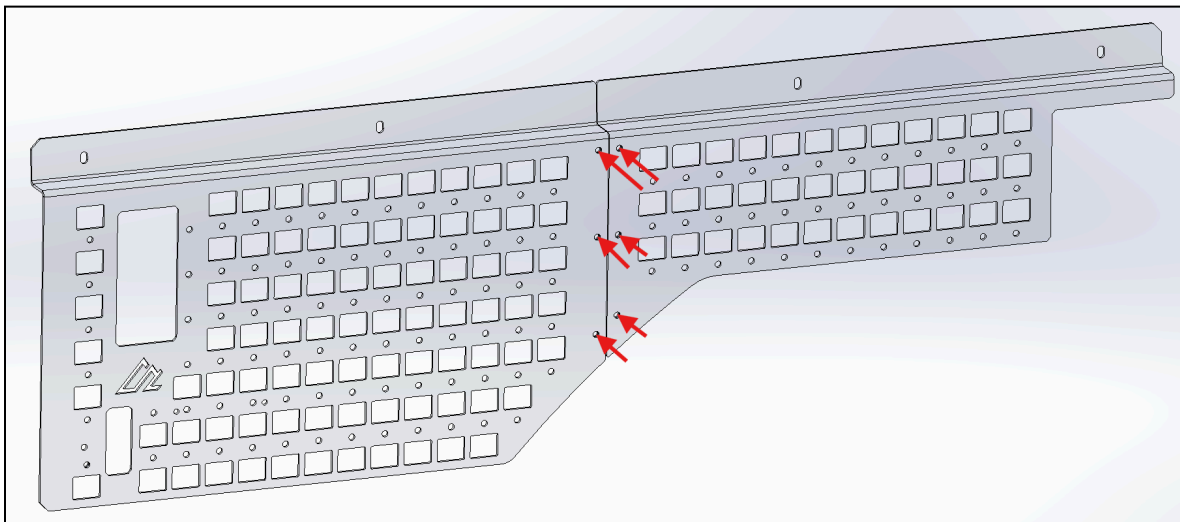
If you didn't purchase the Driver Side Bed MOLLE Panels, skip this section

Step 1 - Connect the Driver Side MOLLE Panels

Flip over the **Front Driver** and **Rear Driver Side Panels** and align the **Middle Connector** Bracket with the six holes shown below.

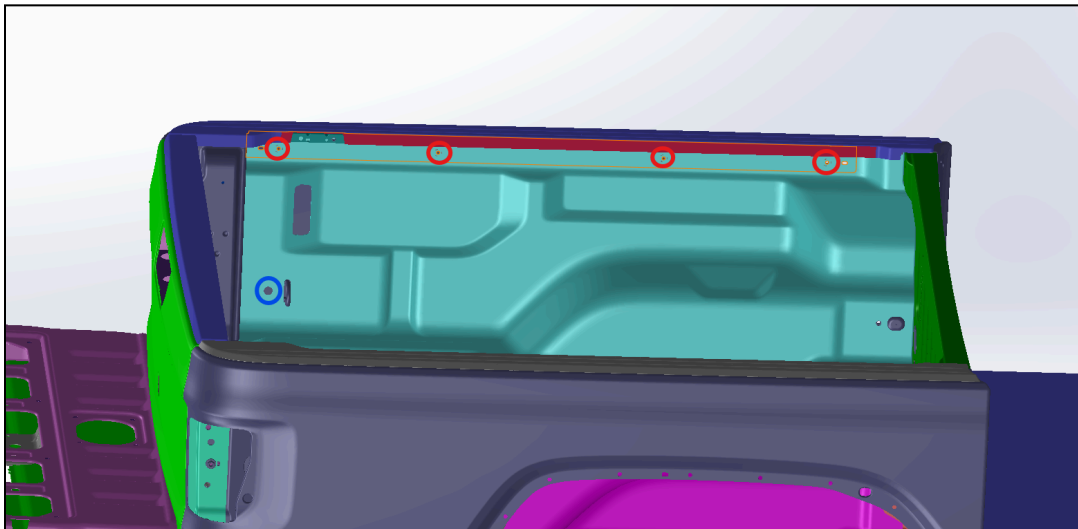


Then using **(6) M6x14mm button head bolts** and **(6) M6 Nuts**, bolt the connector into the front face of the panels

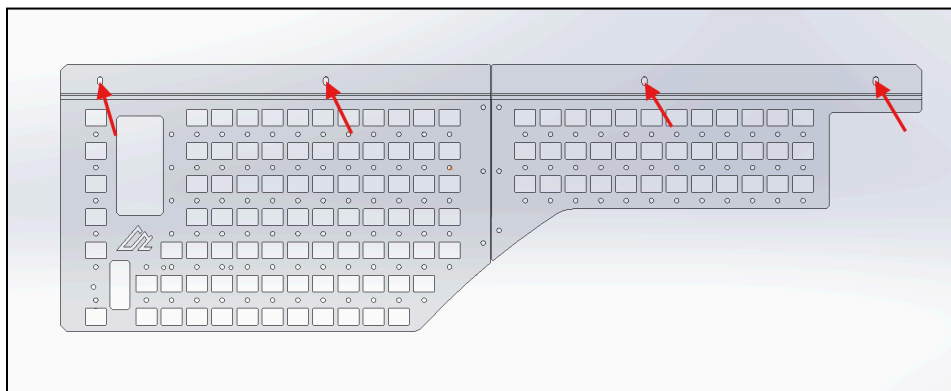


Step 2 - Mount the Panels to the Truck Bed

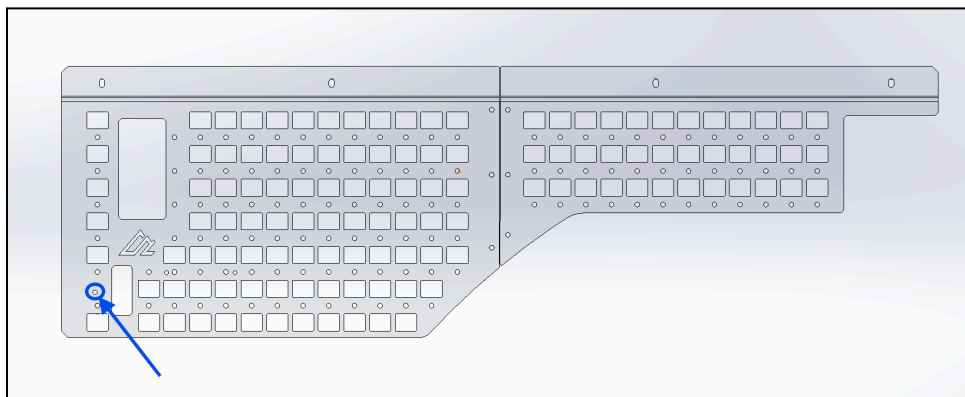
Move the fixture into the bed of the truck and slide it to the driver side of the bed. Align the four front holes on the top of the panel as well as the left side outlined below.



Then using **(4) M6x14mm button head bolts**, bolt the 4 holes on the top of the panels into the bed of the truck.



We then place the **(3) 7mm spacers** behind the hole highlighted below and use **(1) M6x50mm Bolt** to secure the left side of the panel to the truck bed



Once installed, the driver side should look like this,

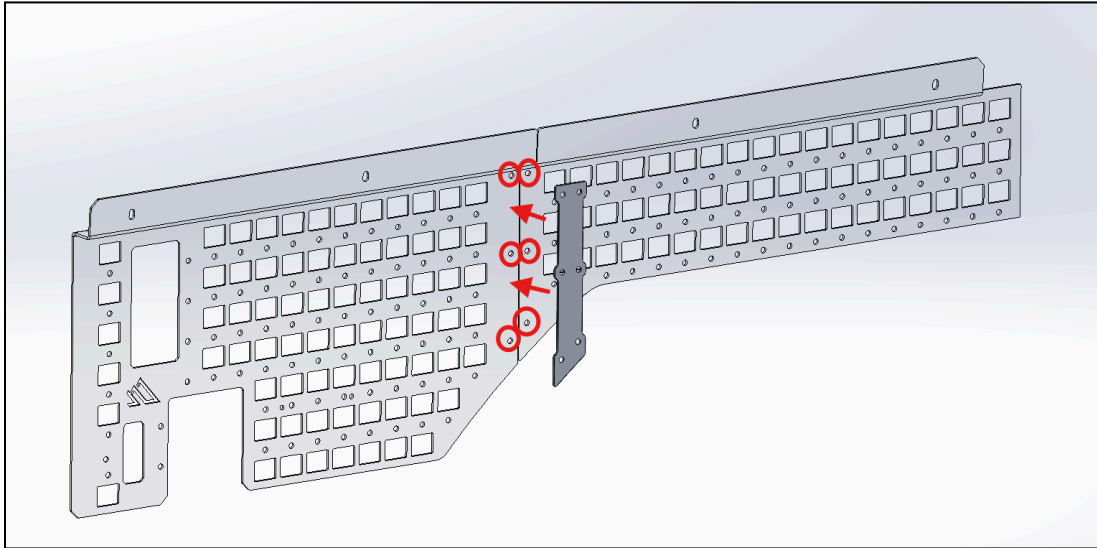


PASSENGER SIDE BED MOLLE ASSEMBLY

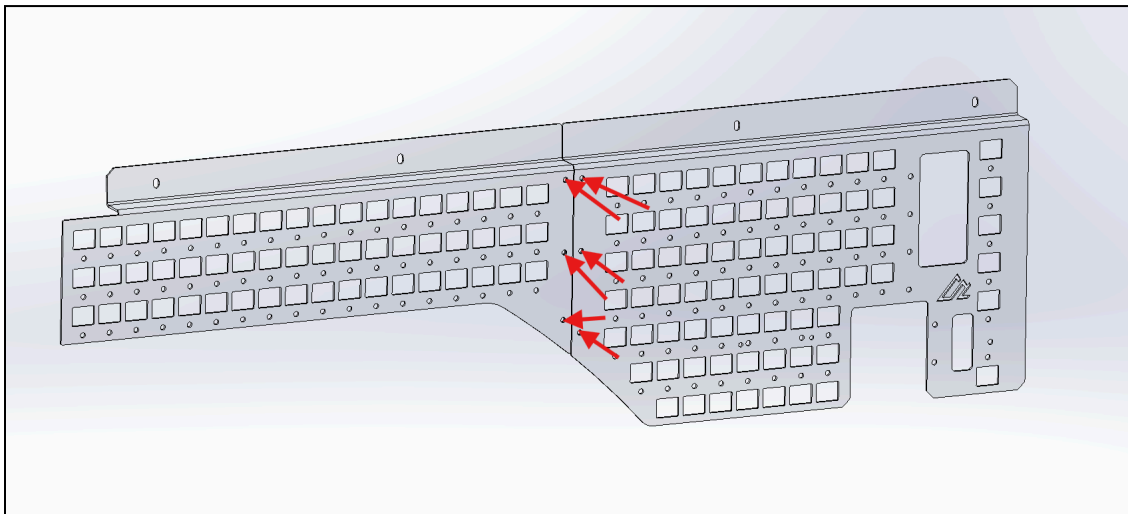
If you didn't purchase the Passenger Side Bed MOLLE Panels, skip this section

Step 1 - Connect the Driver Side MOLLE Panels

Flip over the **Front Passenger** and **Rear Passenger Side Panels** and align the **Middle Connector** Bracket with the six holes shown below.

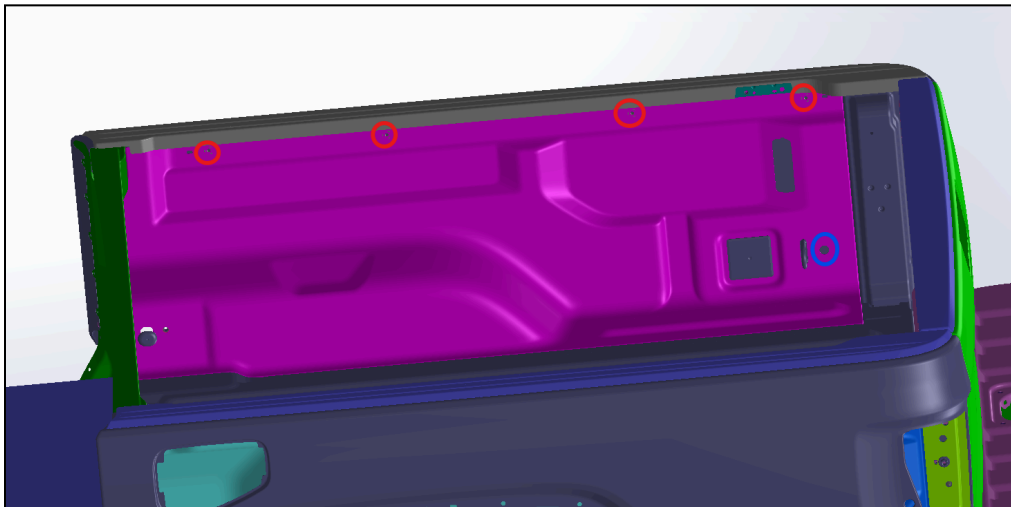


Then using **(6) M6x14mm button head bolts** and **(6) M6 Nuts**, bolt the connector into the front face of the panels

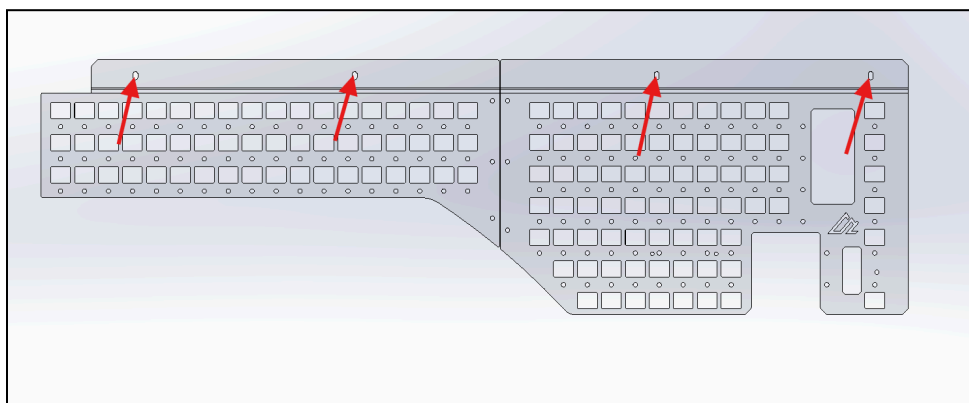


Step 2 - Mount the Panels to the Truck Bed

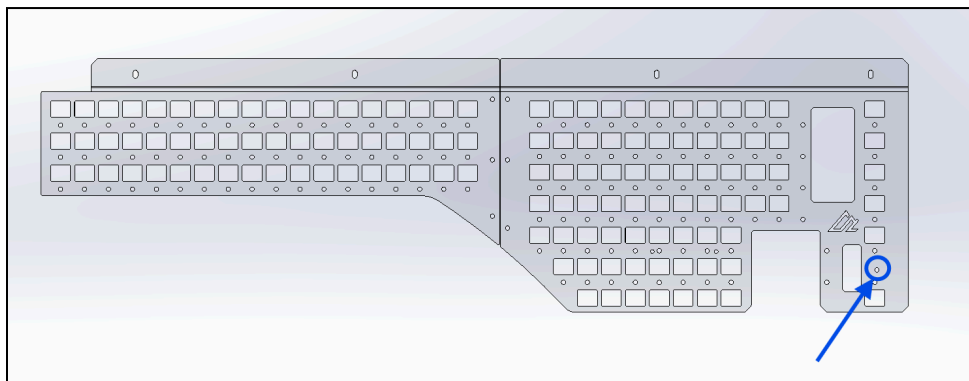
Move the fixture into the bed of the truck and slide it to the driver side of the bed. Align the four front holes on the top of the panel as well as the left side outlined below.



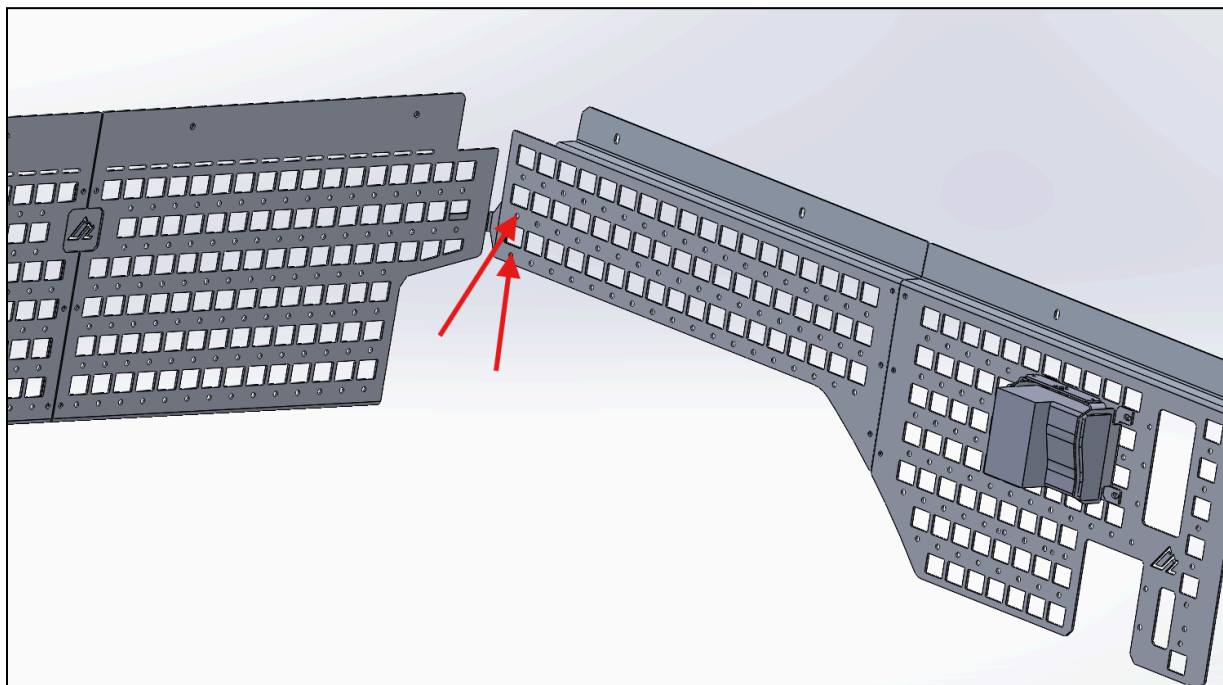
Then using **(4) M6x14mm button head bolts**, bolt the 4 holes on the top of the panels into the bed of the truck.



We then place the **(3) 7mm spacers** behind the hole highlighted below and use **(1) M6x50mm Bolt** to secure the left side of the panel to the truck bed



NOTE: If you have purchased the Front Bed MOLLE Panels, bolt this panel to the connection bracket as shown below



Once installed, the driver side should look like this



Share Your Photos!

We take great pride in building our products and we hope that pride extends to you after installing your Bed MOLLE Panels. If you are able to share your photos online (Facebook and Instagram), please tag **@AmericanAdventureLab**. We would love to see how it turned out and give you some reciprocal attention in return!

Congrats! You're all done!

Thank you!

At American Adventure Lab, we strive to improve anywhere we can. If you experience any issues with this product or have any suggestions, please let us know.

If you have any questions or concerns, please don't hesitate to reach out to us at 385.202.4188 or via email at Support@erp.adventurelab.com.

